



Bi-State Sage Grouse Local Area Working Group: Voluntary Partnership Rather than Regulatory Driven Conservation

**Steve Lewis, Extension Educator, University of Nevada Cooperative Extension
Steven Fulstone, Nevada/California Rancher**

Bi-State LAWG Lifespan

Born - November 2001

Active 2001-2005 (Planning Group)

Hiatus (hibernation)

Active 2011 – present (Planning & Implementation Group)



Bi-State LAWG Structure/Makeup

4.5 million acres

Six Population Management Units

PMU Contacts

Distinct Population Segment



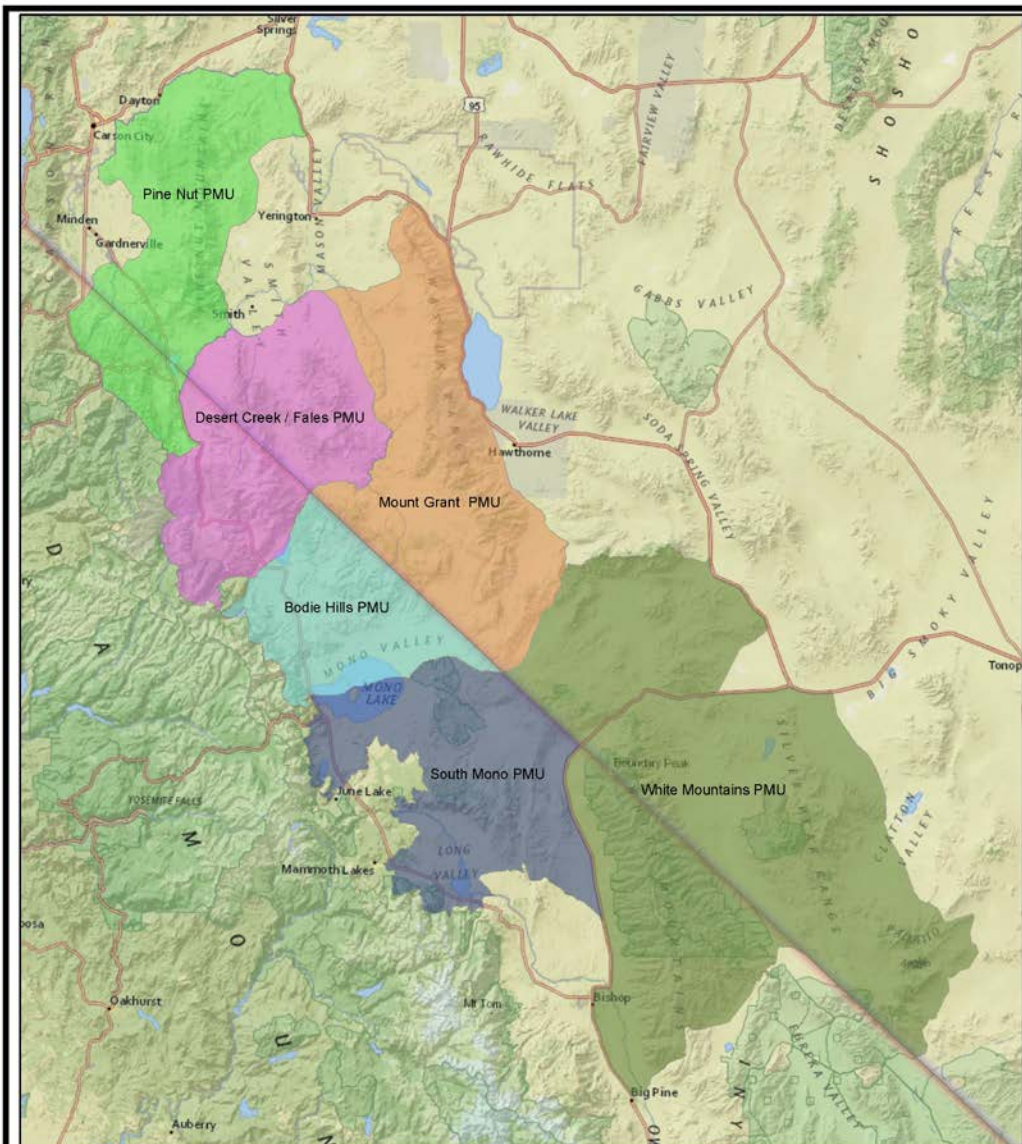


Figure 1
General Location of Population Management Units (PMU)
 Bi-State 2012 Action Plan



Important Characteristics

- Inclusive
- Positive/Enthusiastic
- Consensus oriented
- Strategic
- Get work on the ground
- Relationship builders
- Respect



5-point Levels of Consensus



- 1. I can easily support the decision or action**
- 2. I can support the decision or action, but it's not preferred**
- 3. I can support the decision or action with minor changes**
- 4. I can support the will of the group, but I don't necessarily agree**
- 5. I cannot support the decision or action**

Bi-State LAWG Habits

- Meetings
- Field Trips
- Potlucks
- Open Houses
- Forums
- Lectures
- Celebrations



Get out on the ground



Engagement

- Meeting announcements
- Identity & invite those missing
- Hold meetings in various locations

Early Main Players



Keith
Davis
3-2010

Plan Writer

**Local Area Working
Group – LAWG**

**Technical Advisory
Committee – TAC**

LAWG Roles

- **Meeting in PMU groups between LAWG meetings**
- **Identify and confirm threats**
- **Prioritize threats**
- **Suggesting actions to address the threats**
- **Fill action spreadsheet gaps**
- **Conduct field trips, open houses, etc.**
- **Review TAC recommendations to approve or amend**
- **Evaluate and approve action plan pieces as developed**
- **Be learners**

TAC Roles

- **Meet between LAWG meetings as needed**
- **Work up threat prioritization criteria to aid LAWG members**
- **Recommend past, present, future spreadsheet categories**
- **Tackle difficult issues that require science base, ie. monitoring and adaptive management protocols**

Greater Sage-Grouse Conservation Plan for the Bi-State Plan Area of Nevada and Eastern California, June 2004

FWS found that a listing was warranted but
precluded

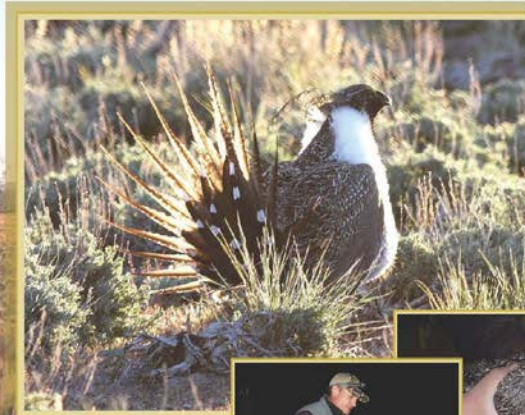


BI-STATE ACTION PLAN

Past, Present, And Future Actions

**FOR CONSERVATION OF THE
GREATER SAGE-GROUSE
BI-STATE DISTINCT POPULATION SEGMENT**

March 15, 2012



Prepared For The:
Bi-State Executive Oversight Committee For
Conservation of Greater Sage-Grouse

Prepared By The:
Bi-State Technical Advisory Committee
Nevada and California

THREATS

- Spread of invasive plants/associated changes in sagebrush community structure and dynamics
- Wildfire and altered fire regime
- Residential and commercial development, associated land-clearing activities for access roads, utilities, and fences
- Increased recreational use of roads and trails
- Proliferation of predators
- Improper grazing management

Bi-State Threats

SAGE GROUSE CT 6500



ACTIONS

Pinyon-Juniper Encroachments - removal: mechanical and burning

Wildfire Rehabilitation

Urbanization - land exchange, purchase, donation, conservation easements



Infrastructure - fences: modification, removal, marking; roads: permanent closures; powerlines: removal

Grazing - livestock facilities: wildlife ramps, watering facilities; livestock exclusion; wildhorses: herd gathers and contraception

Invasive and Noxious Weed Control

Habitat-based Threats - riparian meadow quality: irrigation, prescribed fire, mechanical treatments; sagebrush quality: restoration

EOC Roles

- **Confirm action priorities**
- **Estimate costs of each action**
- **Establish action lead agency/organization and obtain funding commitment**
- **Stay apprised of progress with annual progress reports**

Table 1. Commitments of funding from EOC partner agencies for Action Plan implementation and additional Bi-State Greater Sage-Grouse conservation actions.

Source	Amount
Bureau of Land Management	\$6,500,000
Natural Resources Conservation Service	\$12,000,000
USDA Forest Service	\$13,900,000
California Department of Fish and Wildlife	\$2,500,000
Nevada Department of Wildlife	\$3,400,000
US Geological Service	\$400,000
Total Agency Action Plan Commitment	\$38,700,000
Mono County	\$2,200,000
US Fish and Wildlife Service	\$1,000,000
Private Contributions (e.g., landowners, NGOs)	\$3,333,333
Overall Commitment	\$45,233,333

Perennial Challenges

A wide landscape of a grassy plain with mountains in the background under a cloudy sky. The foreground is filled with dense, green and brown vegetation. The middle ground shows a vast expanse of similar vegetation stretching towards the horizon. In the background, there are several mountain ranges under a sky with scattered white and grey clouds.

- **Reporting/Documenting Progress - Outreach**
- **Maintain participation, encourage engagement, build relationships**
- **Data management**

Reporting/Documenting Progress - Outreach

The screenshot displays the Mono County website interface. At the top left is the Mono County logo, which includes a stylized mountain, river, and tree, with the text "MONO COUNTY" below it. To the right of the logo, the text "Mono County" is written in a large, blue, serif font, followed by "California's Eastern Sierra" in a smaller, blue, sans-serif font. In the top right corner, there is a "Select Language" dropdown menu. Below the header is a dark blue navigation bar with a search box and the text "Search". Underneath this is a brown navigation bar with the following menu items: "Community", "Business", "Departments", "Boards and Commissions", and "Online Services". The main content area features a large banner image of a mountain range with autumn-colored trees. Overlaid on the right side of this banner is a dark blue box with the text "Community Development" in white. Below the banner is a dark blue navigation bar with the following menu items: "Building", "Code Compliance", "Planning", and "RPACs". At the bottom left, there is a "Home" link. At the bottom right, there are two buttons: "BI-STATE SAGE GROUSE MOCK-UP" and "COMMUNITY DEVELOPMENT MENU".

Mono County California's Eastern Sierra

Select Language ▼

Search

Community Business Departments Boards and Commissions Online Services

Community Development

Building Code Compliance Planning RPACs

Home

BI-STATE SAGE GROUSE MOCK-UP

COMMUNITY DEVELOPMENT MENU

Bi-State Committee Relationships

LAWG

PMU'S, Planning,
Implementation,
Grassroots, All interests

EOC

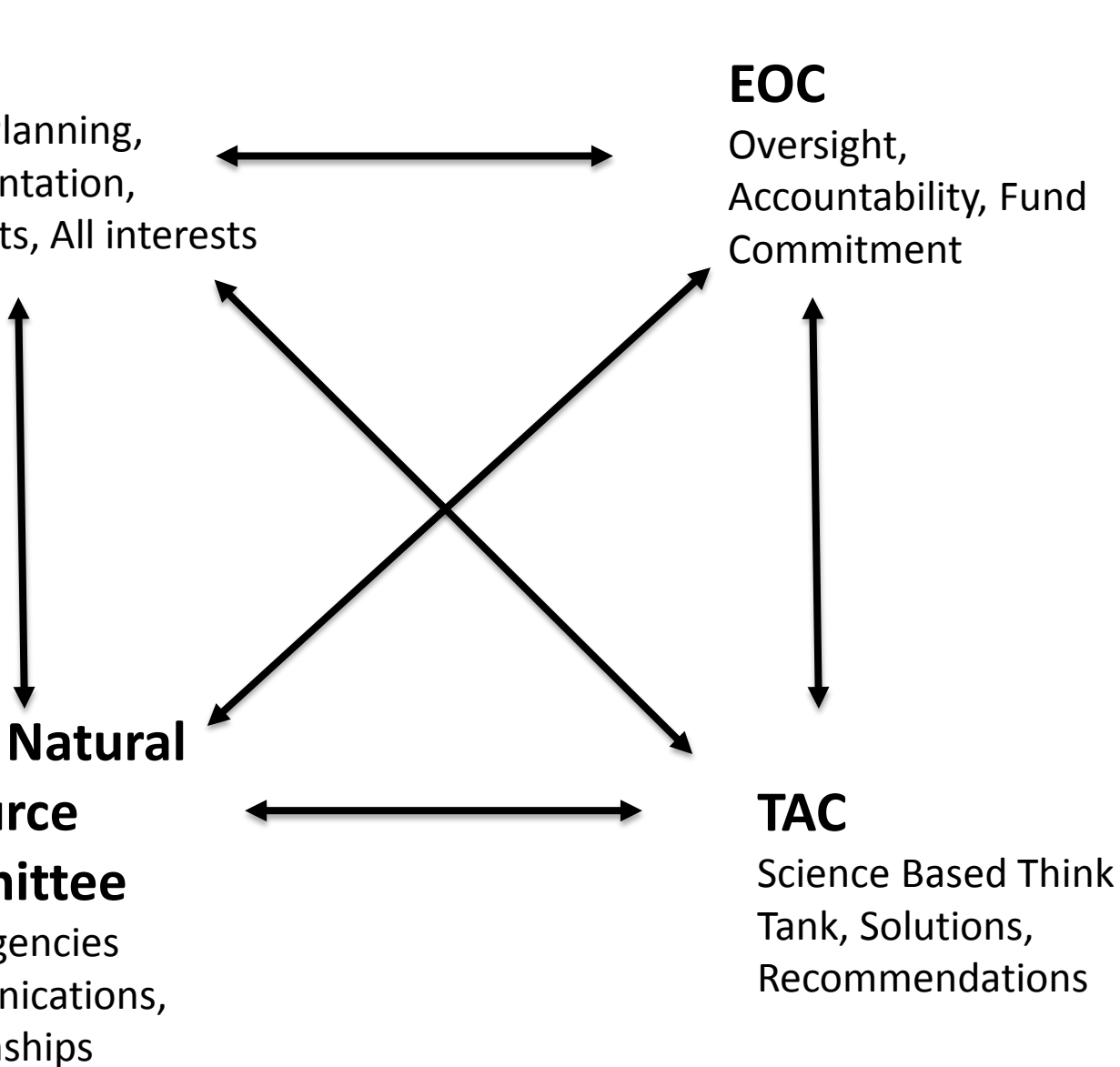
Oversight,
Accountability, Fund
Commitment

Tribal Natural Resource Committee

Tribe/Agencies
Communications,
Relationships

TAC

Science Based Think
Tank, Solutions,
Recommendations



LAWG Magic

- Big Picture
- Many Minds
- Support Funding
- Coordinated
- Local Leadership



BREAKING NEWS: \$8 Million Fund Created to Improve Water Quality and Conserve Sage-Grouse

January 23, 2017 by Marguerite

Great news for Eastern Sierra conservation – and we're thrilled to share it with you first! In a landmark victory for local conservation and the long-term health of the Eastern Sierra, the USDA's Regional Conservation Partnership Program (RCPP) has created an \$8 million fund to support initiatives conserving the Bi-State population of greater sage-grouse and enhancing ranch water quality in the region.





Cooperative Partners Working Together

Friday, June 12, 2015

3:00-8:00 p.m.

Dinner at 6:00 p.m.

Bridgeport Ranch Outdoor
Event Center

Downtown Bridgeport, CA

Cost = \$30

RSVP by June 8, contact

Steve Lewis, lewiss@unce.unr.edu

Registration Form below

*Come celebrate the
tremendous amount of
conservation work that has
been done to improve Sage-
grouse habitats.*

This is a “break-out session”
you won’t want to miss!!!





What's become obvious & accepted

Sage-grouse are a permanent part of our lives

The focus is on rangeland health & wellness – not single species

So what is the success formula?

There is no
cookbook solution
to productive
conservation work

Main Ingredients

- Belief
- Talent
- Perseverance

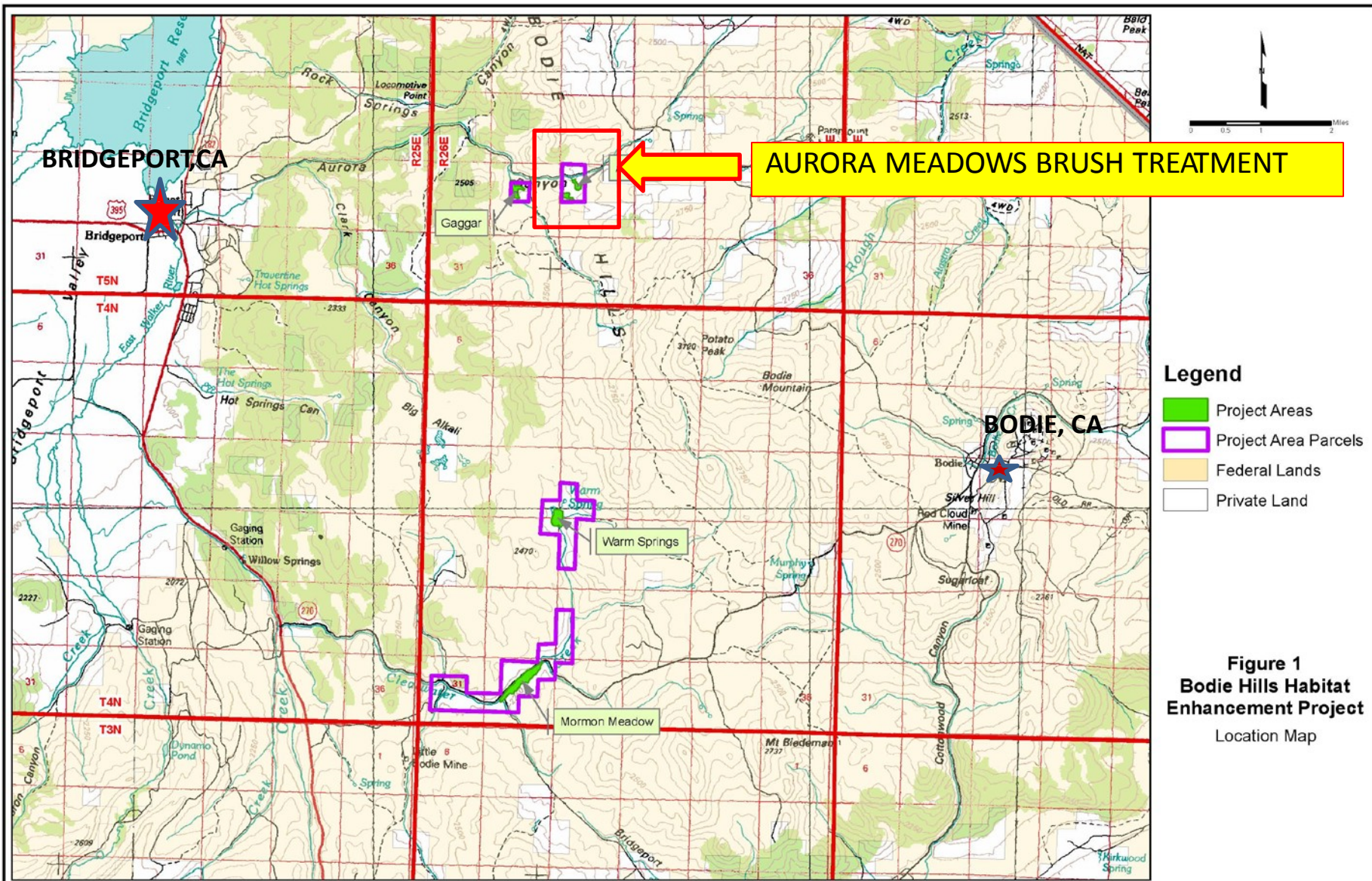


Strut On



BI-STATE VEGETATION TREATMENT PROJECTS





2009 CONSTRUCTION



2009 CONSTRUCTION



AURORA MEADOWS BRUSH TREATMENT



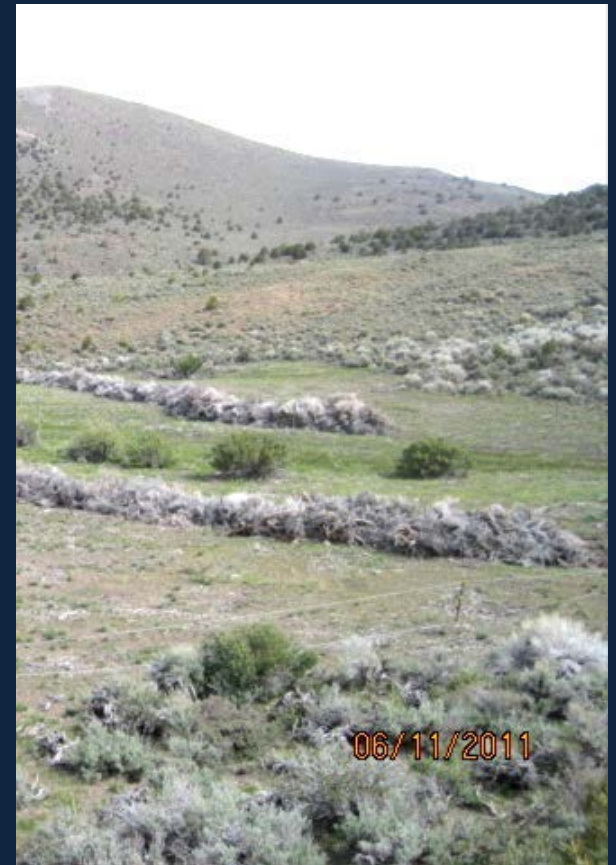
**2009
BEFORE**

**2011
After
Brushing**



AURORA MEADOWS BRUSH TREATMENT

2011



AURORA CANYON

2010



AURORA CANYON



2010



AURORA CANYON

Before



After



AURORA TREE REMOVAL

2005
AFTER



2004 BEFORE
Spring

CINNIBAR MOWING



2004 AFTER Fall



CINNIBAR TREE CUTTING

AFTER

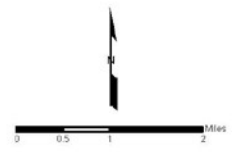
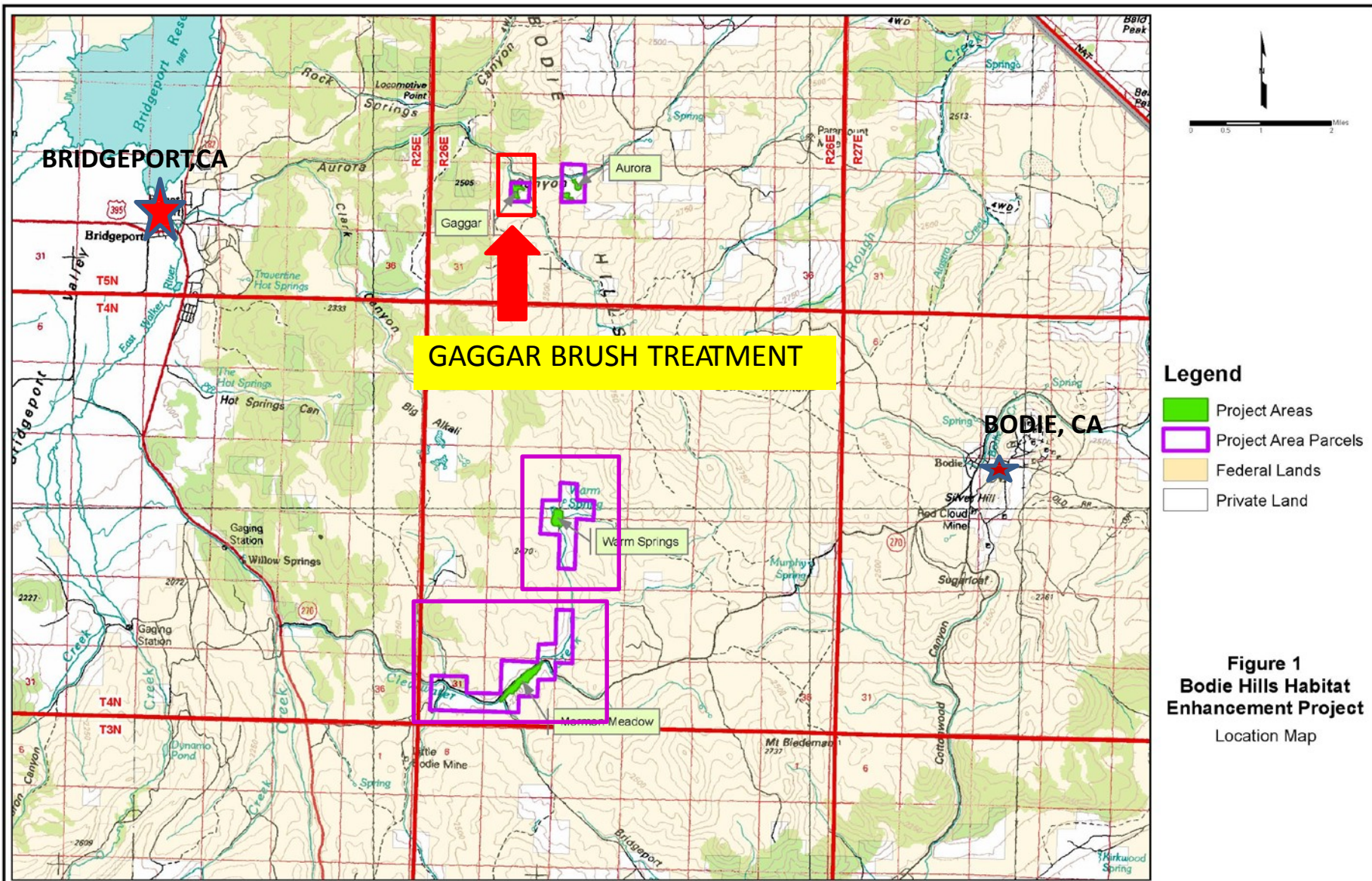


CINNIBAR TREE CUTTING



**2005
AFTER**





- Legend**
- Project Areas
 - Project Area Parcels
 - Federal Lands
 - Private Land

Figure 1
Bodie Hills Habitat Enhancement Project
 Location Map

GAGGAR

2009 BEFORE



2011 AFTER



GAGGAR

2011

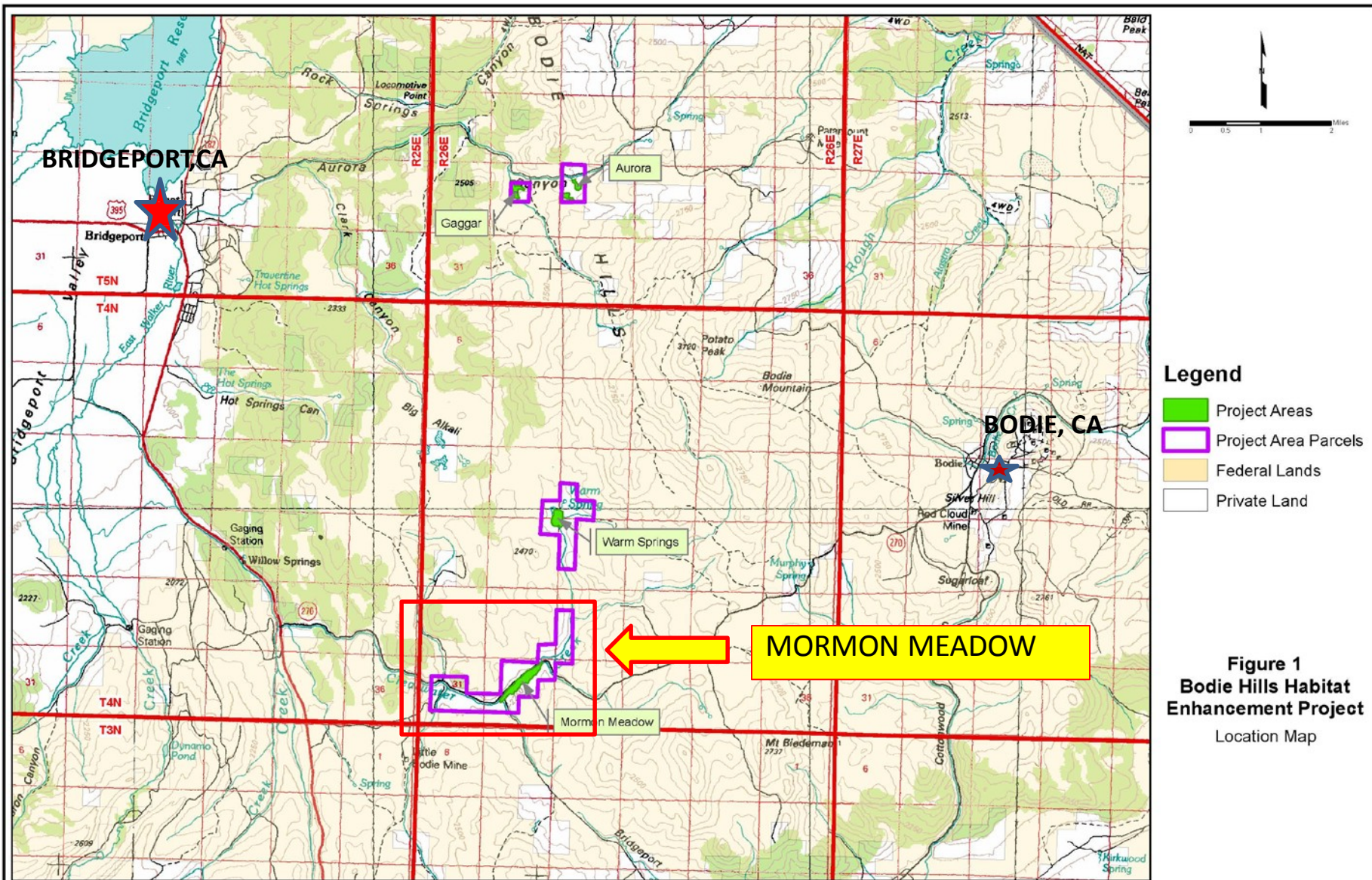


GAGGAR



GAGGAR





- Legend**
- Project Areas
 - Project Area Parcels
 - Federal Lands
 - Private Land

Figure 1
Bodie Hills Habitat
Enhancement Project
 Location Map

MORMAN MEADOW IRIS TREATMENT



2009

BEFORE

**2011
AFTER**



06/11/2011

MORMAN MEADOWS

IRIS TREATMENT

2010 Wick treatment following grazing



MORMAN MEADOWS IRIS TREATMENT

2010



MORMAN MEADOWS AFTER TREATMENT



06/11/2011

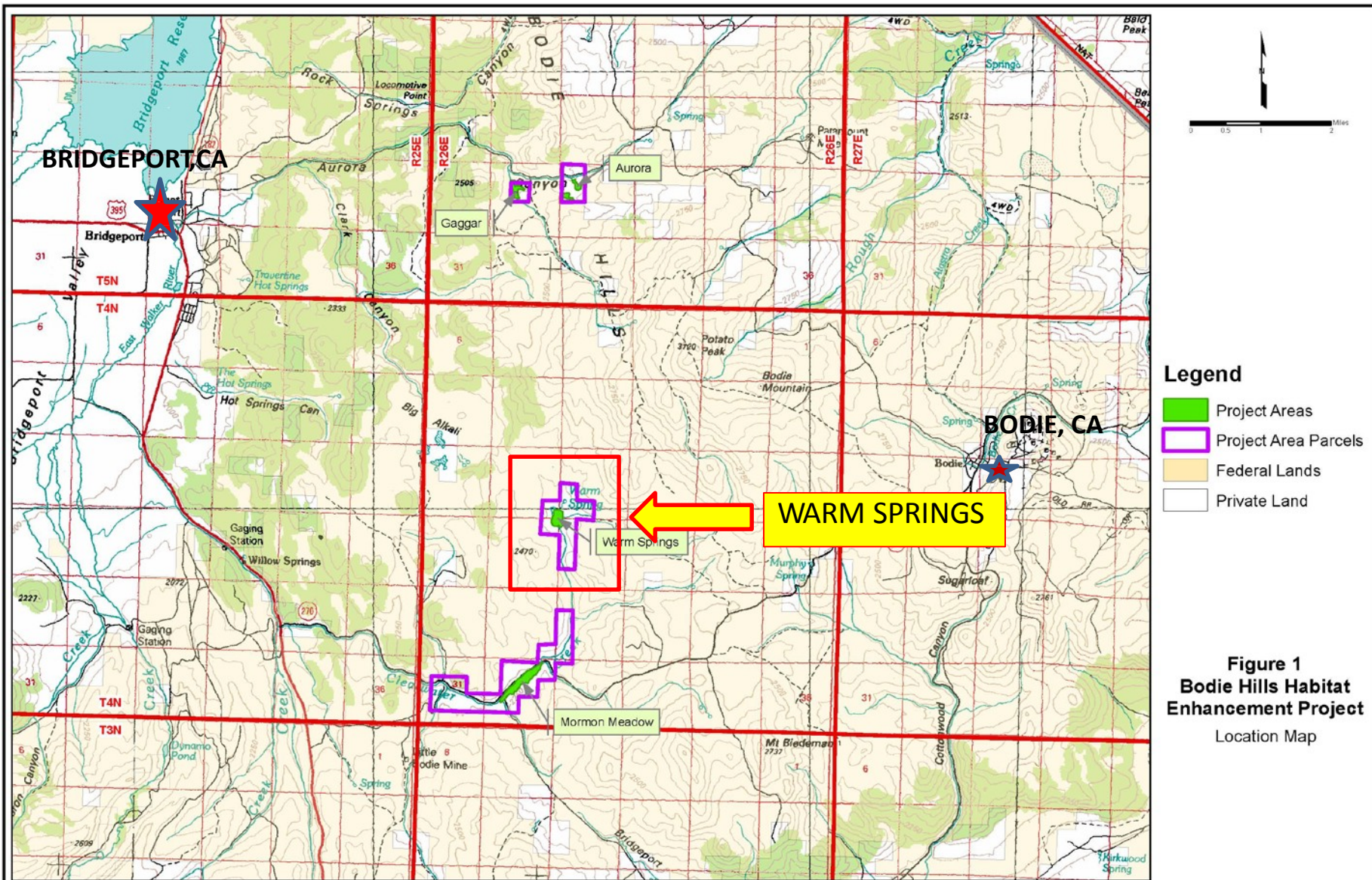


06/11/2011

MORMAN MEADOWS AFTER TREATMENT

2011





- Legend**
- Project Areas
 - Project Area Parcels
 - Federal Lands
 - Private Land

Figure 1
Bodie Hills Habitat
Enhancement Project
 Location Map

WARM SPRINGS



2009 Before Treatment

**2011 After
Treatment**



WARM SPRINGS

2011



WARM SPRINGS

2011



MILK RANCH



2004



2005

SWEETWATER MOUNTAINS, NV

2011



2012



SWEETWATER MOUNTAINS, NV

2011



2012



SWEEWATER MOUNTAINS, NV

UNTREATED



TREATED 2012





NYE CANYON, NV



NYE CANYON

Neighbor using other techniques

2009



2011



NYE CANYON

2009



2011



NYE CANYON, NV

2009



2011





SWEETWATER MOUNTAINS, NV

PJ USFS TREATMENT



SWEETWATER MOUNTAINS, NV PJ TREATMENT

USFS NOT TREATED



USFS TREATED



Summary

- Saving ourselves from a listing – fear of regulatory world
- Creative methods to improve habitat
- Started small – early implementer
- Results were beyond expectations
- Results spawned buy-in with others
- Trust has been established giving more management latitude
- Now expanding treatment to other areas