

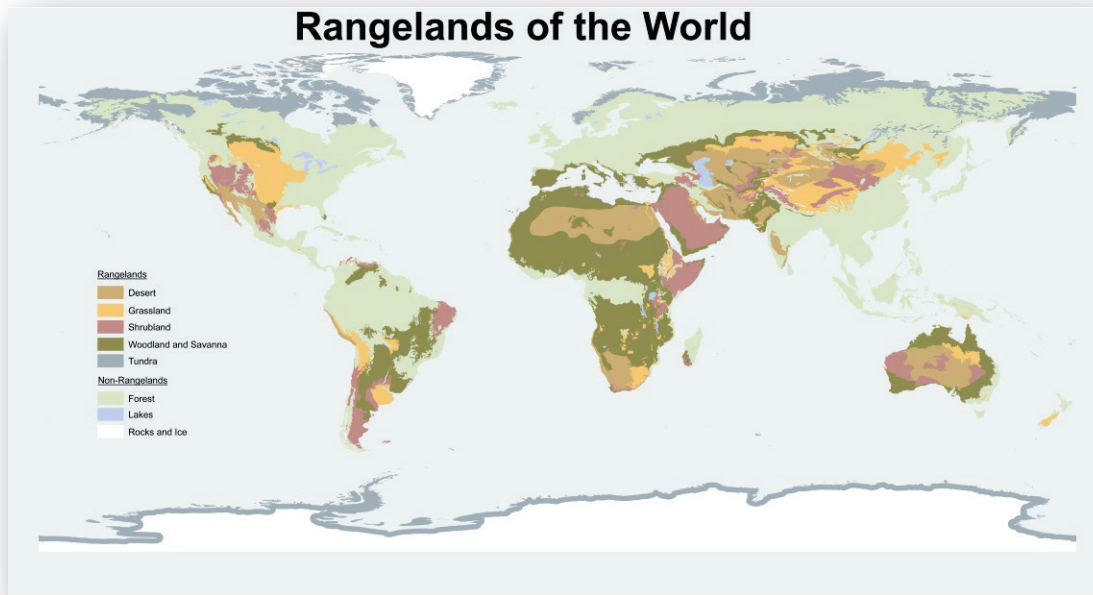
Adaptive Management of Rangelands: Science, Practice and Partnership

Special Symposium

Society for Range Management 66th International Meeting

8:40	M. Fernandez-Gimenez	<i>Social Learning through Adaptive Management</i>
9:00	C. Knapp	<i>Collaborative Adaptive Science for Self Reliance</i>
9:20	E. Kachergis	<i>Adaptive grazing management on working ranches</i>
9:40	R. Reid	<i>Evolution of adaptive management in pastoral systems</i>
10:00		<i>~Break~</i>
10:20	L. Roche	<i>Adaptive management for diverse stakeholder goals</i>
10:40	L. Huntsinger	<i>A triangular approach to the adaptive management circle</i>
11:00	D. Briske	<i>Integrating adaptive management into rangeland research</i>
11:20	All	<i>Closing Panel</i>

Rangelands: Multiple-use working landscapes



Multiple-use landscapes supporting a multitude of ecosystem goods and services.

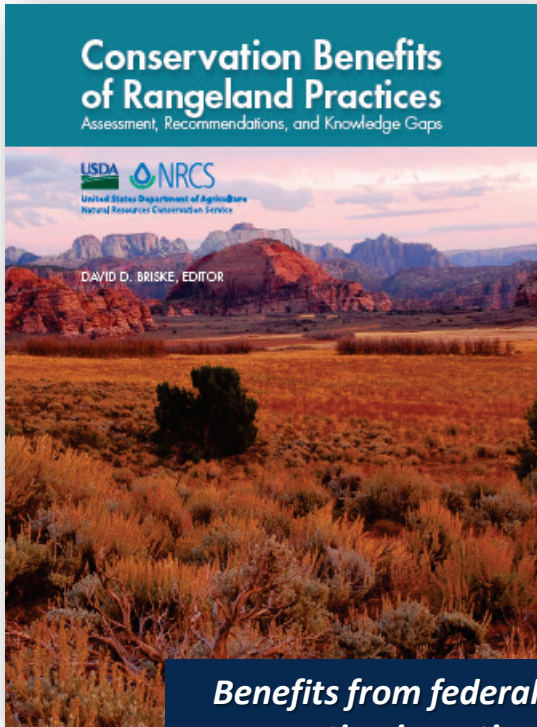


Rangelands: Multiple-use working landscapes

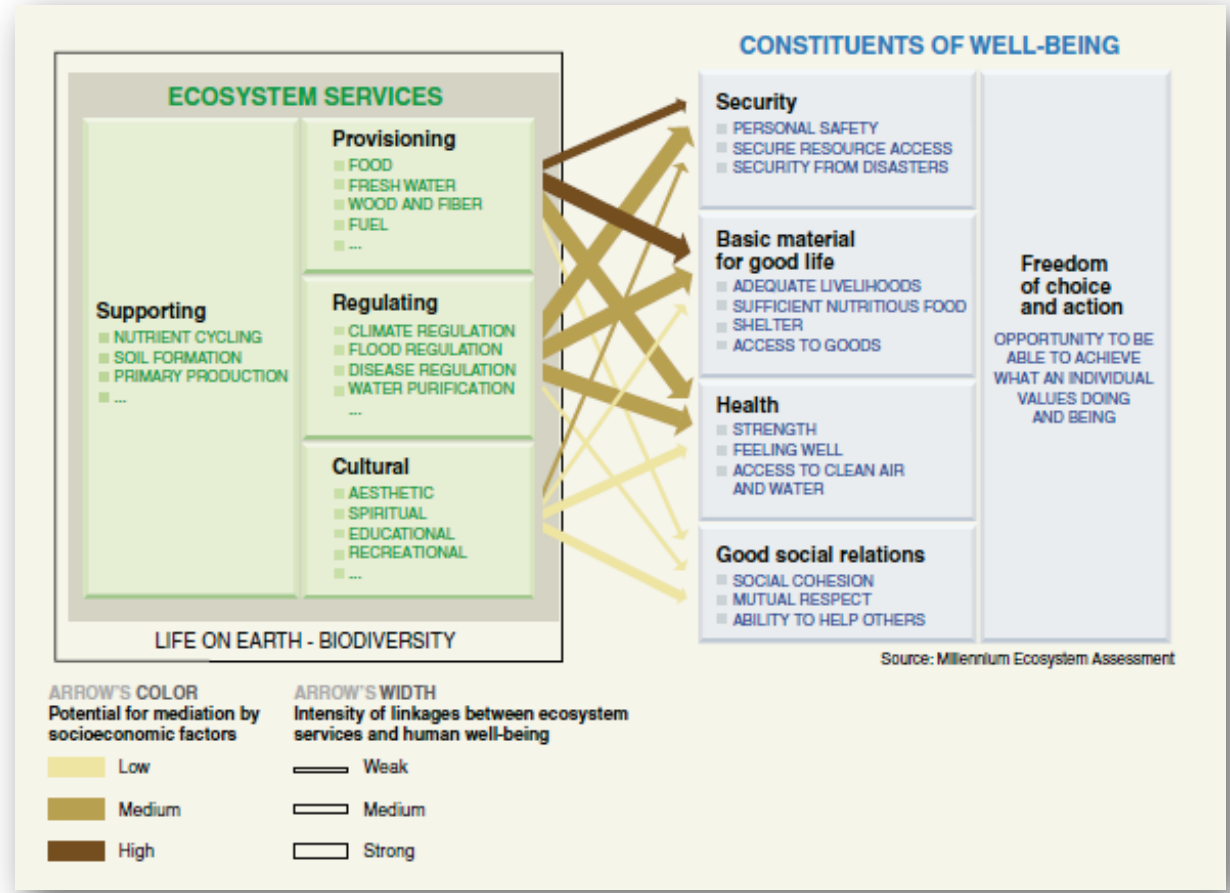
Complex Systems

Global context of human well-being and life on Earth.

Provide multiple services

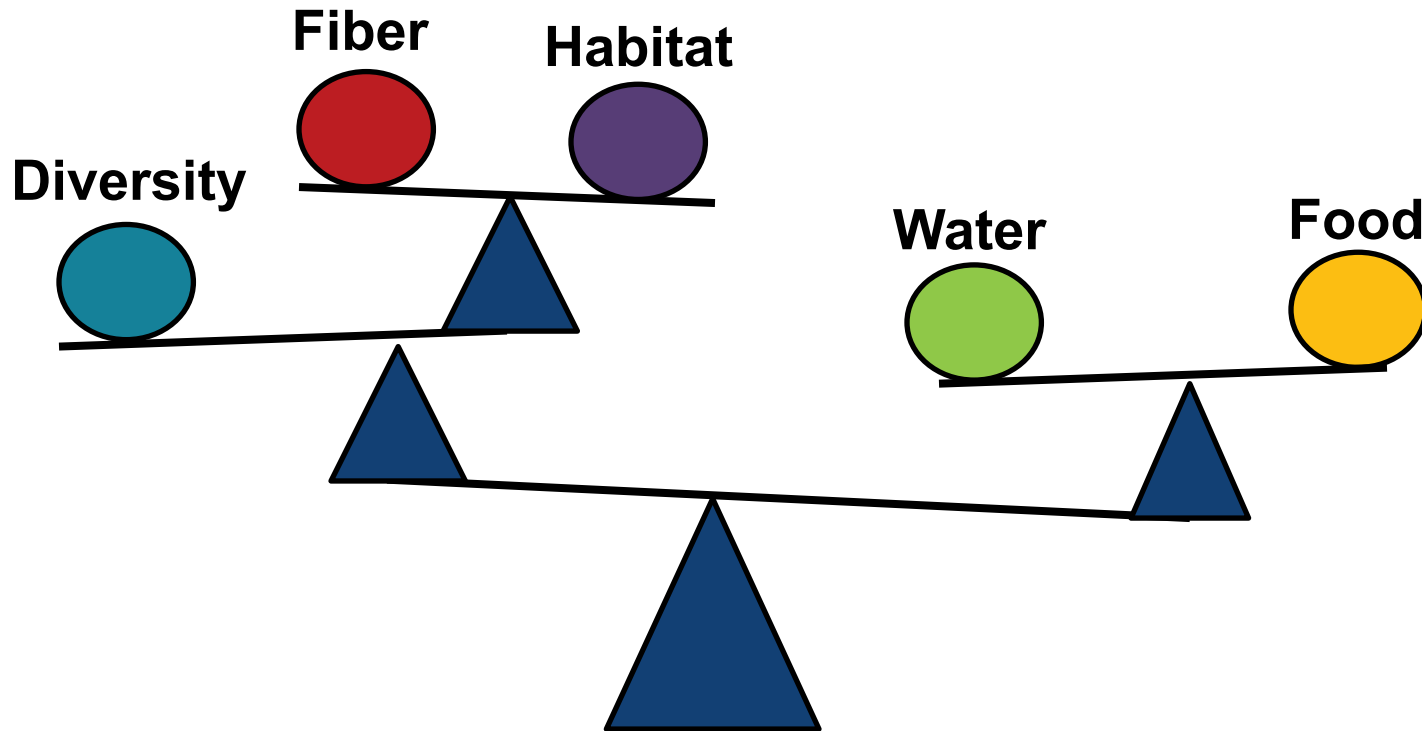


Benefits from federal conservation incentives?



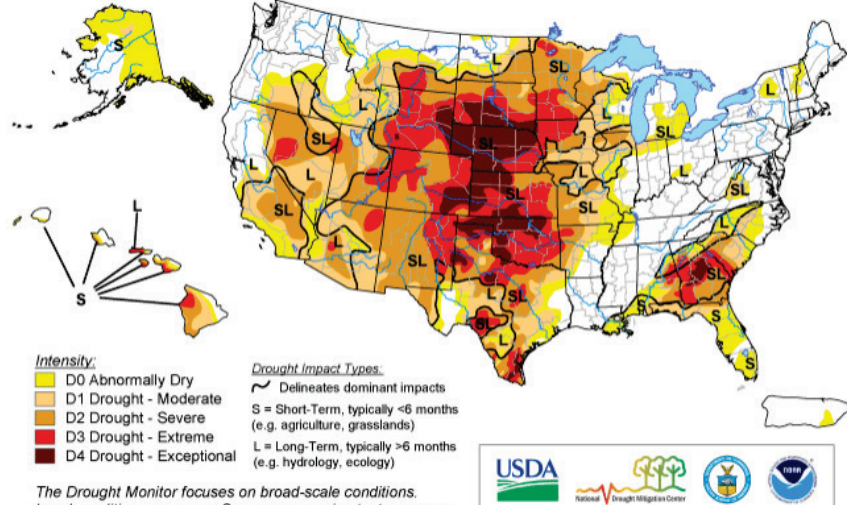
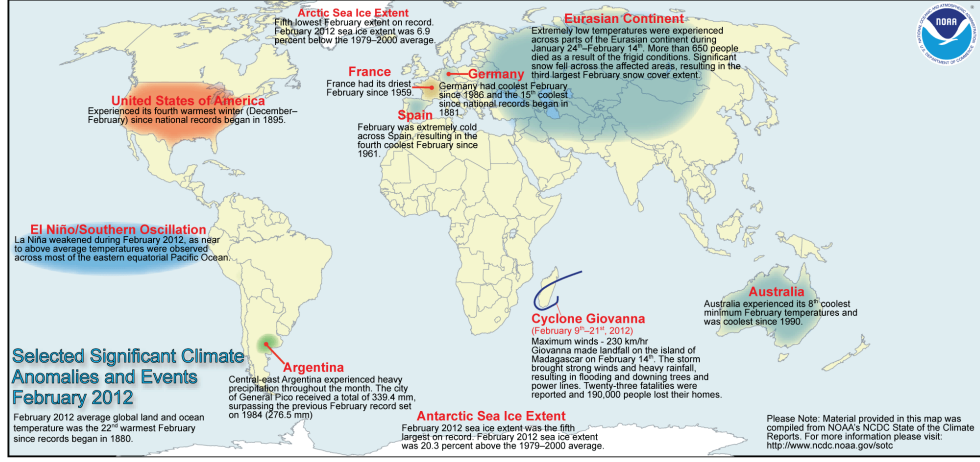
Millennium Ecosystem Assessment

We must innovate and manage to balance ever growing population demands for food, water, habitat, recreation...

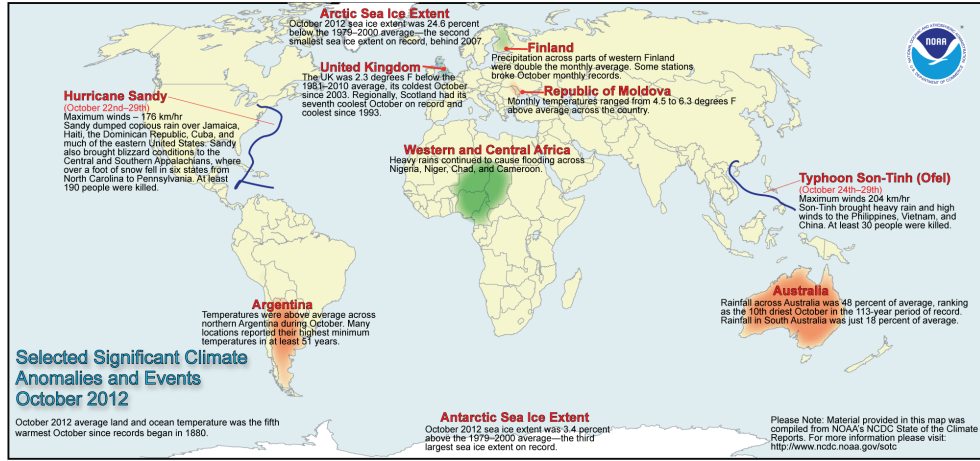


...in an already variable and changing environment

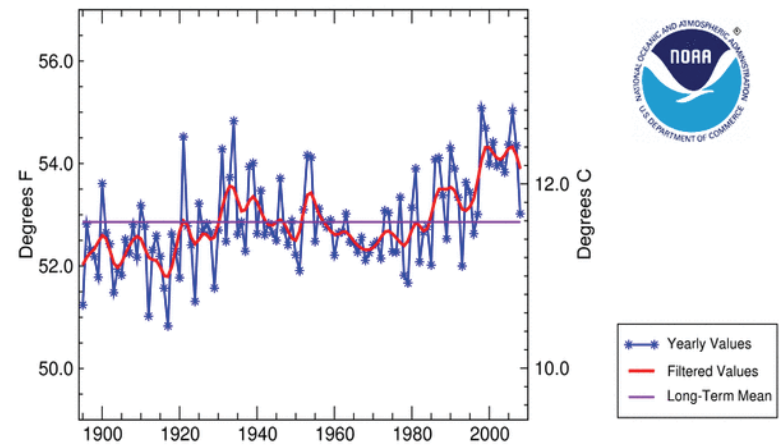
February 2012



October 2012



National (Contiguous U.S.) Temperature 1895 - 2008



Adaptive Management of Rangelands: Science, Practice and Partnership

Moving Forward

1) Enhance collaboration between scientists and managers

- *Diverse partners*
- *Generate relevant knowledge for managing multiple-use, working landscapes*



2) Incorporate socio-economic factors in examining ecological outcomes

- *Link decision-making to outcomes*



3) Adaptive management for meeting multiple goals

- *Learning from management actions and responding to changing conditions.*



Science, Practice and Partnership

Effective Stewardship

Sound Policy

Best Practices

Applied Science

Foundational Partnerships

Science, Practice and Partnership

Adaptive and Collaborative Science

- Fostering social networks for shared learning.
- Connecting decision making with field ecology.
- Collaborative, adaptive management for multiple stakeholder goals.
- Moving forward to meet future challenges.



Symposium Partners

Leslie Roche, *University of California-Davis*

Emily Kachergis, *USDA-ARS Rangeland Resources Research Unit*

Corrie Knapp, *Alaska Center for Climate Assessment and Policy*

David Briske, *Texas A&M University*

Maria Fernandez-Gimenez, *Colorado State University*

Lynn Huntsinger, *University of California-Berkeley*

Robin Reid, *Colorado State University*

Justin Derner, *USDA-ARS Rangeland Resources Research Unit*

Ken Tate, *University of California-Davis*



Some Points for Discussion

How can we translate adaptive management from science to practice?

How can we build partnerships for collaboration in adaptive management?

What are existing barriers to adaptive management and how can we overcome them?

...